

SOFTWARE PACKAGE

SMX-M71M, SMX-M72, and SMX-M73 Cameras

SMX-M7x series cameras software package contains Standard Application, Drivers, User Guide and SDK (API, examples, documentation).

Standard Application provides control of various set-up commands demonstrating the cameras performance.

API allows full control of all camera features and along with examples and documentation enables easy integration of the camera into the customer applications.

A set of examples included into the SDK serves as a tutorial in developing new applications.

Software Compatibility

- C/C++
- Visual Basic
- Delphi

Drivers

- WDM compatible
- Direct Show compatible
- Twain included
- Linux (upcoming)

System Requirements

- Windows XP Professional SP1 or SP2
- Windows Server 2003 SP1 or SP2

API Function Categories

- Get camera info
 - Get/Set camera features
 - Video stream controls (Start/Stop)
 - Image grabbing
 - Image correction controls (brightness, contrast, gamma)
 - Snapshot controls (Exposure)
 - Open /Close camera
-

Camera Application Controls

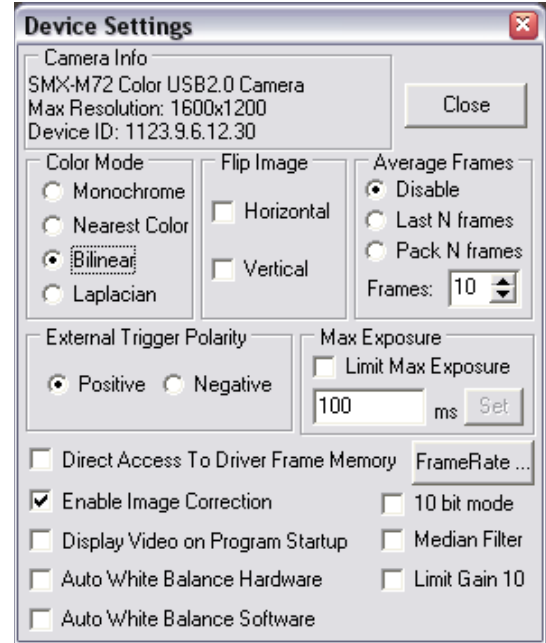
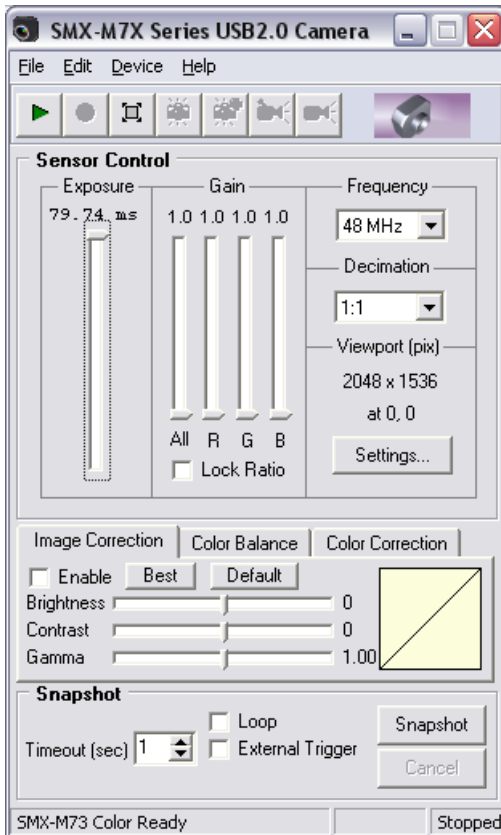
- Image correction (brightness, contrast, gamma)
- Color balance (RGB) and Color correction
- Viewport
- Image capture
- Video capture
- Rolling shutter video mode
- Color Bayer algorithm selection
- Image sensor options
- Histogram
- Software zoom
- 8/10 bits output
- White balance (color model): software and hardware
- Frame rate control

Assistance and Help

Our developers are ready to advise and assist with the integration of the SDK into the relevant application

Screens





Copyright © 2007 Sumix Corporation
 3403 Southwood Dr.
 Oceanside, CA 92054
 Tel.: (877)233-3385; Fax: (508) 300 5526
 Email: camera@sumix.com
 www.sumix.com

The information in this document is subject to change without notice. The software described in this document is furnished under a license and be used or copied only in accordance with the terms of such license.