

# SOFTWARE PACKAGE

## SMX-150M and SMX-150C Cameras

---

SMX-150 series cameras software package contains Standard Application, Drivers, User Guide and SDK (API, examples, and documentation).

Standard Application provides control of various set-up commands demonstrating cameras performance.

API allows full control of all camera features and along with examples and documentation enables easy integration of the camera into the customer applications.

A set of examples included into the SDK serves as a tutorial in developing new applications.

### Software Compatibility

- C/C++
- Visual Basic
- Delphi ActiveX Component

### Drivers

- WDM compatible
- Direct Show compatible
- Twain included Linux (upcoming)

### System Requirements

- Windows XP SP1 or SP2
- Windows Server 2003 SP1 or SP2

### Camera Application Controls

- Image correction (brightness, contrast, gamma)
  - Color balance (RGB) and Color correction (HSL)
  - Viewport
  - Image capture
  - Video capture
  - Global shutter video mode
  - Color Bayer algorithm selection
  - Image sensor options
-

- Histogram
- Software zoom
- 8/10 bits output
- Multiple slope mode (Global shutter)
- Double slope mode (Rolling shutter)
- White balance (color model)
- Frame rate control

### API Function Categories

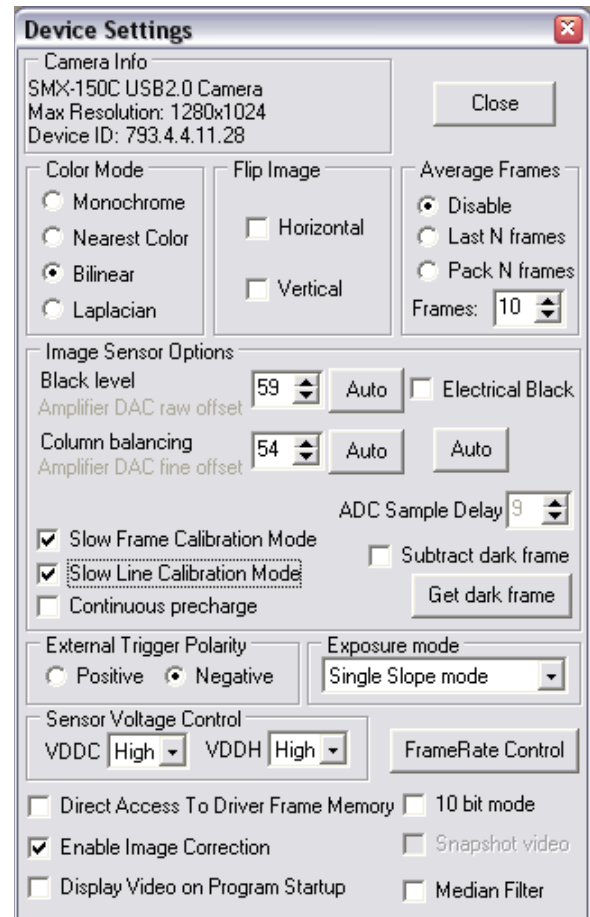
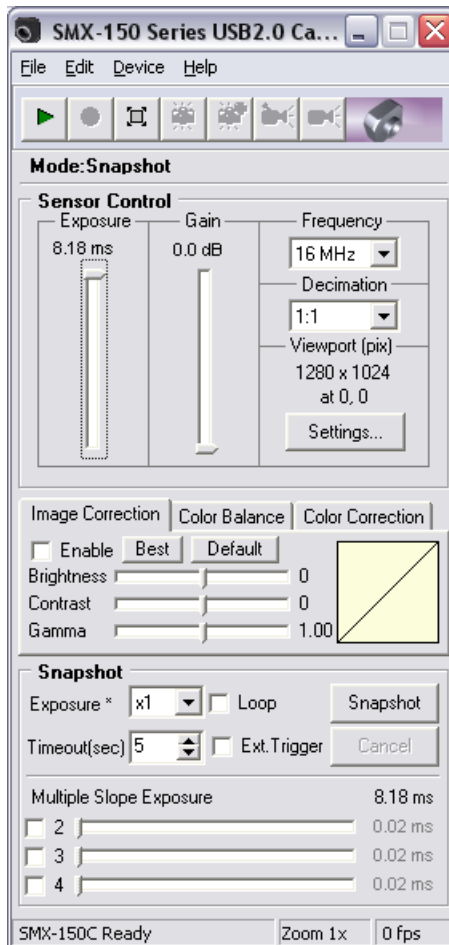
- Get camera info
- Get/Set camera features
- Video stream controls (Start/Stop)
- Image grabbing
- Image correction controls (brightness, contrast, gamma)
- Snapshot controls (Exposure)
- Open /Close camera

### Assistance and Help

Our developers are ready to advise and assist with integration of the SDK into the relevant application.

### Screen





Copyright © 2007 Sumix Corporation  
 3403 Southwood Dr.  
 Oceanside, CA 92054  
 Tel.: (877)233-3385; Fax: (508) 300 5526  
 Email: camera@sumix.com  
 www.sumix.com

The information in this document is subject to change without notice. The software described in this document is furnished under a license and be used or copied only in accordance with the terms of such license.